



# e-PAFinder

## Happy Fourteenth Birthday!!!

The Silicon Valley PAF Users Group began in September 1989 and has its 14<sup>th</sup> birthday this month. The group exceeded the expectations of the founders in both membership and accomplishment.

The group began when there was a compelling need for a support group for PAF users. PAF was the only good genealogy program available. Instructions were not good and the program was not as user-friendly as it is today. DOS was enough to scare many genealogists and Windows could not Run PAF. That has all changed, but

there is still a need for help getting started using PAF. New needs for help have surfaced in the past few years. The Internet has become a significant genealogy tool. Desktop publishing and Web sites are being used to publish family histories. The computer has become the tool of choice for preserving, editing and distributing family photos. Many new software packages are on the market that promise to help the family historian become even more effective. The Silicon Valley PAF Users Group is providing classes and other help in each of these areas.

What will SV-PAF-UG be like in another 14 years? We can only answer with the old adage, "There is nothing so constant as change." Family history will be different then. We expect SV-PAF-UG to be helping family historians 15 years from now, explaining the latest software, computer hardware, and techniques that help you produce quality family history to share with your families just as they are today.

Come join us at the October meeting for a celebration of our fourteen years and a choice of some excellent classes.

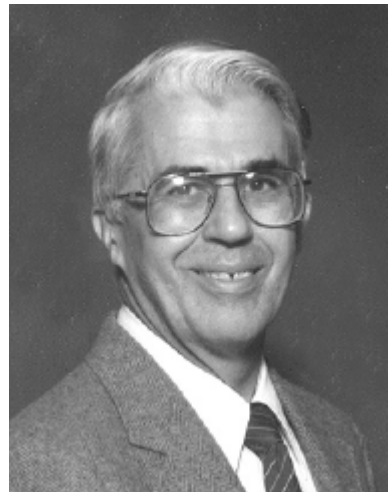
### May Family History Seminar Planned



For the May SV-PAF-UG meeting we will hold an all-day genealogy seminar. The keynote speaker will be Beth Uyehara, a newspaper columnist and author of *The Zen of Genealogy*. In addition there will be numerous "how-to" classes on family history research topics such as finding and using census records, using probate records, doing research in colonial New England, British Isles Research, and much more. Other classes will be offered on preserving and using old family photos, publishing family history, using the

Internet for genealogy, choosing and using computer software for genealogy, documenting you sources, publishing genealogy on the Web and more. Watch for pre-registration information to choose the classes you wish to take. A syllabus of information as sources for all classes will be included with your registration. This event is sponsored jointly by the Silicon Valley PAF Users group, and the Santa Clara Historical and Genealogical Society, an organization dedicated to the preservation of local history and genealogy. Any proceeds from this event will be used to add material to the collections at the Santa Clara Family History Library and the Genealogical Collection at the Santa Clara City Library. Those who have Beth's book will have an opportunity to meet the author and have their book signed.

### November Seminar US Military Records



#### Duane Dalley to Speak

At the November meeting we are planning a four and a half hour seminar on the use of US military records for family history. These records are occasionally overlooked by genealogists, but often contain treasures that are otherwise difficult to find. These may include the occasional death or marriage certificate originally sent in with a pension application, or the list of children listed in a widow's pension application.

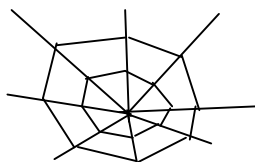
### In this Issue . . .

<u>Title</u>	<u>Page</u>
Happy Birthday . . . . .	65
May Seminar . . . . .	65
US Military Records Seminar . .	65
Ask Dr. PAF . . . . .	66
Spiderwebs . . . . .	66
Clean Up Your Database . . . . .	67
U.S. Colonial Records . . . . .	69
Software of Interest . . . . .	71
October Classes . . . . .	71

The speaker is Duane Dalley, who has taught classes before for the SV-PAF-UG. Duane comes from Albion, Idaho, and served in the U.S. Navy during World War II and the Korean War. He holds a Bachelor of Science degree and a Master of Science degree from the University of California, at Berkeley. He has a Certificate in Genealogical Research (Professional Option) from Brigham Young University and is an Accredited Genealogist with the Family History Library, Salt Lake City, Utah. He is also an Accredited Genealogist with the International Commission for the Accreditation of Professional Genealogists, and a Certified Genealogical Record Specialist (CGRS) with the Board for Certification of Genealogists, Washington, D.C. Mr. Dalley has worked as an active professional genealogist for the past 12 years. He has given numerous classes and lectures for genealogical organizations and has published several family histories. Mr. Dalley has done considerable research in the military records of his family which spans the period of time from the Colonial Wars down through the present time.

Mr. Dalley will review the various records and materials available for the family history researcher. Emphasis will be placed on the availability of materials that can be accessed locally including the National Archives, Pacific Sierra Region, at San Bruno and through the Family History Centers. Basic research strategies will be presented with primary emphasis on the Revolutionary War and the Civil War records. Access to materials that are not locally available and how to obtain these needful records will also be discussed. •

## Spider Webs



### eBay to Sell for NGS

The U.S. National Genealogical Society now has a Genealogical Society Outlet Store on eBay. There they will sell

overstocks, scratch and dent items and clearance items. Like the auction items on eBay, payment is easy with a credit card using their PayPal service. To see the used books and other items for sale, go to:

<http://www.stores.ebay.com/id=70898411>

### Latin Glossary

For help with unfamiliar Latin terms found in church and legal documents, try this glossary at:

<http://www.genealogy-quest.com/glossaries/latin.html>

### Early American History

This site contains two sections of source material on American history from the eighteenth and nineteenth centuries. The Archive Library contains complete works for original research. The documents were written at the time and give significant insight as to what life was like back then. The Topical Archives are the product of other people's research, and are subject-specific compilations of material from multiple sources. Visit the site at: <http://www.1st-hand-history.org/>.

### 1880 U.S. Census Images

The 1880 U.S. Census Index which was released by The Church of Jesus Christ of Latter-day Saints is now linked with digital images of the original census documents. An agreement between MyFamily.com, Inc. and The Church of Jesus Christ of Latter-day Saints; makes it possible to view the 1880 U.S. Census index and the images at both [www.ancestry.com](http://www.ancestry.com) and [www.familysearch.org](http://www.familysearch.org). The index may be searched free at both sites. Patrons using the Family History Library in Salt Lake City or more than 4000 family history centers around the world can view the images at no charge. LDS Church members who identify themselves as members when using FamilySearch.org can also view the images free. Others can access images for 30 days using FamilySearch.org for \$9.95. •

### Genealogical Quote

If a man dies and leaves his estate in an uncertain condition, the lawyers become the heirs.

*Elbert Hubbard 1856-1915*

American Author

## Ask Dr. PAF



*"I Give No Answers Before Their Time!"*

by Dr. Cornelius D. PAF

**Q.** When I was entering data into PAF I missed a generation in my pedigree. There was too big a gap between a father and son. I have since found the one to put in the middle. How do I do that?

**A.** Using fictional names and dates, a solution could be as follows: Charles (S—son) was born in 1770. The pedigree has James (we'll call GF—grandfather) born in 1710 as his father. Robert (SF—son and father) who was born in 1740 and was the son of James was really his father.

The first step is to print a family group record (with RINs) for James (GF) as a parent and as Charles as a parent. This is to make sure that no children are lost and the spouses are still linked. Then unlink Charles from his parents. With Charles highlighted, go to "Edit," click on "Parents," click on "Unlink." Unlink other children of James (GF) that you have found to be children of Robert (SF) not of James (GF). If you found that Robert was already linked as a son of James, add Charles as a son of Robert and his siblings. Remember as you add these names that are already in the program, do not enter them again. Make the choice of "Selecting Existing Individual."

If Robert was not known to be a son of James, add him. Check to see whether he might already be in the database. Add Charles and his siblings as children of Robert. Print or Preview the family group records for James, Robert and Charles. Since the spouses of these people have not been unlinked, and Charles was not unlinked from his children, the only differences should be in Robert and his children. •



## *Clean up and Fix up your PAF Database*

By Mary Lou Harline

Not many of us follow the old housekeeping schedule of spring cleaning and fall cleaning, going through every room in the house. There are still other clean up jobs that need to be done more often than twice a year. The first day of autumn is September 22 and now is a good time to take a look at PAF data files for areas that need cleaning. You may find some surprises as you give your database a thorough examination. The following suggestions for cleaning and fixing are especially useful when you import a GEDCOM file from a relative or from someone on the Internet. Since the GEDCOM file should always be entered into a new file, these cleaning and fixing ideas give you a smaller area to clean before you import the new data into your main database.

PAF has tools available for finding the problem areas and fixing them. Additional tools are available in other programs that you can use with PAF to do a thorough cleanup.

### **Finding Possible Data Problems**

This tool (found in "Print, Lists, Possible Problems") shows problems with dates, the order of children in a family, the order of marriages, a husband and wife with the same surname, burial dates before the death date, a child born when the parents are too young or too old, and a child born before the marriage date of the parents, and LDS ordinance problems. While we know that each possible problem can be "not a problem," they all need to be investigated to determine whether there was a mistake in entering the data.

The possible problem of parents being too old and too young depends on the criteria you set up in the "Options" section of the "List" screen. The usual range is between 16 and 45 for the age of the mother and for the father at the birth of a child. The usual age difference between parents is up to 15 years. You can change the dates if you find that many of your ancestors fall outside these ranges. Notice that you define the dates for mother and father separately. It wasn't uncommon for a 40 year old man to marry a 20 year old woman, especially as a second wife.

One reason for finding a wide discrepancy between the age of the parents and the child is that a generation was missed. You may actually have the grandparents instead of the parents raising a child. Or you could have an error from entering the data. Or, perhaps the data came from someone who guessed the identity of the real parents and were wrong about the ancestors for that person. If you can't find the missing generation, you may want to change the parent link of the "grandparents" to "Challenged." When you do find the missing generation you can unlink the child and insert the real parents. (For details on entering "Challenged" and to slip in the missing generation.)

If you find a man having children at the age of eight, you need to check that out. One such instance that I found was created by someone who used the standard genealogy estimations for dates: a man is married by age 25 and the first child is born a year later, and other children are born at two-year intervals. The problem with this estimation is that the man's birthdate was based on the birthdate of the ninth child, not the first, a sixteen year difference..

One of the options is to click on a button that will let you know when the children or the spouses are listed out of order. This could be because of an error in the birth date, or because they weren't entered in chronological order. If it is a problem with the order, highlight the name of a parent, click on "Order Children" in the "Edit" menu, highlight the name of the child in the box that comes up, and use the up-down arrows in the box to move the child to the correct position. If you really want your ancestor to be the first in the list even if he/she is the sixth child, you can leave it alone. To maintain good feelings in the family, it might not be good idplomacy to send that GEDCOM to a cousin who is descended from the oldest child.

### **Duplicate Individuals**

The "Duplicate Individuals" list from the report should be checked. Watch for children of the same parents with the same name but different birthdates.

They are not twins, and probably not duplicates — checking the death date of the earliest born child, you may notice that it was before the birth date of the second child. Children were frequently named after parents and grandparents. If a child with a family name died young, the next child of the same sex was given that family name.

Follow the procedures to merge any duplicates. Merging is generally better than deleting.

### **Duplicate Parents**

Even a careful merging may leave you with multiple parents. Finding them isn't difficult. Go to "Advanced Focus/Filter" (in Search Menu) to use the "Field Filters." Click on "Define," then scroll down and highlight "Number of Parents," click on the > to move it to the "Current Filter" box. Choose "is greater than" and enter "1" (sets of parents). You can print them out using a custom report. If the names are similar but with different spelling, they may nor may not be duplicates. Look at the list of children if there is more than one child and look at ancestors of both sets of parents. Look at the sources of the information, if available. It may require more research before you can decide whether an adoption, an error in data entry, or bad research caused the duplication.

### **Duplicate Marriages**

More than one marriage for a man or woman is not rare and a man and woman may have been married to each other more than once. These are not duplicates. A husband and wife with the same RINs and same marriage date for two or three different marriages is a problem. Finding how many marriages for a person, use "Advanced Focus/Filter" as in the duplicate parents problem, except click on "Number of Marriages."

### **Place List Problems**

Printing the place list can help you to have consistency in the place names. Look for postal codes and abbreviated state names. You don't have to change them, but you should choose one method to use and be consistent. Using Postal codes for abbreviations in the United States is discouraged because

those codes can be confusing—too many states start with “MI.” As a rule abbreviations of a place name are not used. Remember that genealogists live in and have ancestors in many countries. Do you like to figure out the abbreviations from a country other than your own? It took a while to remember that NSW was New South Wales in Australia.

The “Place” list in PAF also lists all the birth/christening, death/burial and marriages that occurred in each place. The RIN or MRIN are included to make the corrections easier. This makes for a very long list. There are no options for choosing a small part of the “Place” list but you can print it to a file and print only those pages you want to study and possibly change. You can use “Global Search and Replace” to change the abbreviations. Be careful. It is easier to use the PAF Pal program to change the postal codes. It will do them all with one command. It will also add or delete USA for places within the United States of America. (This is one abbreviation that is acceptable or we wouldn’t have room on a pedigree chart for anything else.)

The places in the list are in order of country first, then state or province, county, city. You can use maps or a gazetteer to verify that you have the name of an actual place. When I couldn’t find any records of Farmington, Middlesex, Massachusetts where my grandmother’s records showed some ancestors lived, I looked at a map and found Framingham, Middlesex, Massachusetts. The ancestors records were there.

Remember that if you are using parish records as your source, you should enter the name of the parish.

In the USA you can find the name of a county when you know the town and the state. RootsWeb.com is one Internet Web site to help. A Postal Guide or Webster’s Genealogical Dictionary also has this information — if the town is big enough.

For research purposes it is easiest to find records when you give the name of the place as it was at the time your ancestors were there. You might see records where the birth, marriage and death are in the same town but in different counties because the county split as more people migrated to that area. The dates when a county was

formed and the name of the parent county can be found in Everton’s *Handy Book* and in Ancestry’s *Red Book*.

When you are working with towns in a country that is unfamiliar to you, be sure you have the equivalent of town, county, state, country in the proper order even when they don’t have equivalents for each level.

The use of the word “County,” or the abbreviation “Co.” is not needed and may be confusing. Remember that in Louisiana a Parish is the equivalent of a county. Alaska does not have counties, it has judicial districts. Hawaii has five counties, all of them were created in 1905. Some cities are not in a county. Learn about the place so you can find the records.

Two new programs are now available to check places in your database and suggest corrections in spelling and errors with the county. These are US Cities Galore and World Place Advisor.

### Names

Look at the names in your database. Is the occupation included as part of the name? Have you used the title correctly? Dr. A. S. Jones, M.D. is redundant. It should be either Dr. A. S. Jones or A. S. Jones M.D. Do you have “Living” or “Unknown” as a name? It is best to leave the space blank when you don’t know the name. When you see “Unknown” on the screen in the space for a name, notice whether there is a RIN associated with it. If it is, you have entered the word Unknown. If not, this is PAF’s way of reminding you to enter a name for that person. (If none of the names have a RIN, look in “Tools, Preferences, Name” to display the RINs.)

### Notes

Look at a print or preview of your notes. Do lines of data go to the end of the page? If not, you may want to delete the line return from the end of the line. This may decrease the number of pages needed to print a family group sheet and will make the printouts look better.

Have you entered yourself as the creator of notes you added? Did you add the name of the person who gave you the information in the notes? Would some of your notes be more useful if the information was included in a source citation?

### Finding Islands

This is not a “Survivor” joke. Sometimes, frequently due to merging, an individual or a family may be cut off from the rest of the ancestors. PAF will create a list of unlinked individuals—finding a lone tree outside the forest. However it will not find two or more individuals that are linked to each other but not to the main group of records. Call this a grove of trees in the forest. You can use GENViewer, or RootsMagic to find these lonely trees, sometimes called islands. Checking your research notes, you can link them back to the rest of the family.

This clean up is not complete even for data problems. There are also other things to consider. Cleaning up your data is not enough if you don’t have a database without internal problems. You should run the Check program (from the File menu) when you back up to be sure your PAF database hasn’t become corrupted. If the Check program shows errors, Steve Cannon, previous program manager for PAF, suggests that you go back to a previous backup. While Check/Repair may fix the error, some data may be lost, or sent to an island (see above problem). The PAFInsight program has features to fix some of these errors. Remember when you do create a backup that you use at least three disks in rotation to avoid backing up bad data over good data.

You can still find areas that need your scrutiny to make sure your data is correct and available. Your computer needs your loving care at times, to defragment the hard drive, and to be sure your anti-virus program is working and up to date. It is easier to keep track of your family when your computer and its programs are clean.

To obtain some of the programs mentioned or for more information about them, go to:

- PAF Pal: [pafpal@bigfoot.com](mailto:pafpal@bigfoot.com)
- RootsMagic: [www.rootsmagic.com](http://www.rootsmagic.com)
- GENViewer: [www.mudcreek.ca](http://www.mudcreek.ca)
- PAF Insight: [www.ohanasoftware.com](http://www.ohanasoftware.com)
- World Place Advisor [www.progenysoftware.com](http://www.progenysoftware.com)
- US Cities Galore [www.uscitiesgalore.com](http://www.uscitiesgalore.com)

## Researching U.S. Colonial Records

By Lesly Klippel

With the proliferation of census records on the Internet, many researchers are now able to trace their families back to the early 1800s sitting at home in their robes and slippers. What an exciting time we live in! Since I started researching in the ice age, I have spent endless hours turning the crank on microfilm readers, taking about two hours each to look name by name through county census records. Now I can do it with mouse clicks! Once you have located your family in one of the original colonies, census records will no longer help you and you must learn to use the surviving colonial records.

Research in colonial U.S. is benefitted by the fact that most surviving records of the period have been published or microfilmed, but very few original records are available to the public because of their fragility. Also, the majority of colonial families have had some research done on them and that research may be available on the Internet, on a CD or as a last resort in this electronic age, a book in a library! However, previously published research should be double-checked as many false assumptions have been made about colonial families, some of which are being corrected by experts in the particular locality. It is a very good idea to join a historical society for the particular area of research such as the New York Biographical and Genealogical Society or the New England Historical and Genealogical Society. Their publications provide current research as well as corrections to errors in previous research.

Other places to check for previous research are Ancestry World Tree at [www.ancestry.com](http://www.ancestry.com) and the databases on [www.familysearch.org](http://www.familysearch.org). Another help is the research outline for the particular state published by the Church of Jesus Christ of Latter-day Saints and available at Family History Centers or as a download or purchase at [www.familysearch.org](http://www.familysearch.org). These provide a wonderful summary of what records are available and where they are housed.

### Published Transcripts and Extracts

In looking at published books, remember that many records were kept on a colony level rather than on a county level so check the card catalog under the colony name as well as the county name.

Many records of the colonial period have been extracted and published in books which are available at the Family History Library in Salt Lake City, at many large research facilities and on CDs. They are a good beginning, but the extracts should be checked against the original records for accuracy.

That brings us to two important skills you will need to acquire: reading colonial handwriting and understanding the terms used in colonial records. A recommended book for the latter is *Colonial American English: A Glossary* by Richard Lederer, (Verbatim Books, Essex, Conn., 1985). Another good book for understanding the lives of our colonial ancestors is *The Writer's Guide to Everyday Life in Colonial America From 1607-1783* by Dale Taylor (Writers Digest Books, Cincinnati, Ohio, 1997). Kip Sperry has written the best book on handwriting called *Reading Early American Handwriting*. Your Family History Center may have these books or you can purchase them on the Internet.

In researching all colonial records, be especially conscious of variations in spelling of names since a mark of intelligence and education was the spelling of names and other words in different ways, even on the same page.

### Immigration

Before the Revolutionary War, immigration was controlled by each of the original colonies, but there was little need for recording the names of immigrants, since nearly eighty percent of the white immigrants were British. However, original settlers were recorded in other records and for many years, researchers have been compiling lists of immigrants from these ancillary documents, including lists of departure from Britain. It is estimated that at least one member in seventy to eighty percent of colonial white immigrant

families has been identified. All of them are indexed in Filby's *Passenger and Immigration Index* which is a compilation of previously published passenger lists and is available as a set of books at many research libraries and as a CD published by Family Tree Maker.

Some important colonial immigration lists include the Pennsylvania oaths of allegiance (required by Pennsylvania starting in 1727), lists of indentured servants sent to Virginia and other colonies and lists of headrights granted for transporting persons to Virginia. To find these records in the Family History Library Catalog (FHLC), see [STATE] - EMIGRATION AND IMMIGRATION.

A major New England immigration project is *The Great Migration Begins* which attempts to catalog all immigrants to New England during a certain time period. The first three volumes (1620-1633) have been published and is available as a database at [www.ancestry.com](http://www.ancestry.com). (Ancestry.com has graciously supplied a free subscription to all Family History Centers so you can view it at your local Center if it has Internet access.)

### Naturalization Records

During the Colonial period, anyone not of British extraction was considered an alien and had to become naturalized in order to vote, own a ship, run for public office, own land and transfer property and real estate to heirs. Citizenship was granted by letters of denization or through an act of Parliament. Most of the records that have survived are the oaths of allegiance signed by passengers disembarking from ships. To find these records in the FHLC, see [STATE] - NATURALIZATION AND CITIZENSHIP.

### Vital and Church Records

In New England, vital records were kept by the town clerks beginning in the 1600s. These have been preserved and published in books, CDs and in the *New England Historical and Genealogical Journal*. Except in New England, vital records were not kept in the colonies

and they depended upon the churches to record christenings and burials. In some colonies, the churches were required to report these events to the civil authorities.

You can determine the church affiliation of your family through family tradition, ethnic origin, the family Bible, baptismal certificates and other papers in the family or by the name of the clergyman who officiated at family weddings (usually listed in the county marriage records). Look him up in a county history or city directory to determine his denomination. If your ancestor was married by a justice of the peace, check the marriages of siblings who may have adhered to the family choice of religion. Follow the same procedure with the clergyman who officiated at funerals as found in obituaries and on death certificates.

Study the history of the time and place to determine which religions were predominant in the area. Remember that immigrants tended to attend churches where their native language was spoken. Once you determine which churches were in the area, check the FHLC under [STATE] - CHURCH RECORDS. Be sure to check all the church records in the area as people tended to cross over if they didn't have a church of their favored denomination available. Baptism of children was such an important ordinance that parents would seek out a minister of another faith in order to have the ordinance performed. You will find German names in the Episcopal registers and English names in the Lutheran registers. So broaden your search and look for interesting spelling variations of the names. In colonial Long Island, for instance, my Carman family is listed as Kermann in the Dutch Reformed

### Church records

The predominant church in New England was the Congregational Church. The South favored the Protestant Episcopal Church. Frontier communities favored Presbyterianism. The Quakers, Lutherans and Presbyterians shared Pennsylvania and the Methodists and Baptists prospered west of the Appalachians..

Many church records are in the archives of the particular denomination, but most colonial records have been published or

microfilmed. In his book, *Survey of American Church Records*, E. Kay Kirkham describes the origins of the denominations and lists the church records available in each state, the years covered and their location at time of publication (1971). His Volume II covers the minor denominations.

During or at the conclusion of the War for Independence, many Anglican ministers returned to England, taking their registers with them. Some of these are now being discovered in England, and it is hoped that they will soon be extracted and the information made available to shed new light on colonial families.

### Marriage Records

The earliest marriage records were kept by the office of the governor. The surviving records are in the state archives and some have been published. Sometimes the colony required a declaration of intent to marry, the reading of banns in the churches on three successive Sundays or a license issued by the colonial governor. In the FHLC, see [STATE] - VITAL RECORDS and look for marriage records in the colonial time period. Also check the county for marriage records from the date of the formation of the county.

### Tax Records

One of the ways the colonies raised revenue was by assessing a poll tax on white males of certain ages (generally 16 to 50 or to 60), also called a *tithable*. The annual poll tax lists can reveal the names of males in the family and the year the sons turned a certain age. The poll tax ages varied both by colony and year so the tax laws of each colony must be studied. A good source for that type of information is the county historical society. Find their contact information on the county web page at [www.usgenweb.com](http://www.usgenweb.com).

Women were not subject to a poll tax but could be taxed for land that they owned in their own name as a widow or a single woman. Any property owned by a wife was in her husband's name. Poll taxes continued into the 1800s. Combined with property tax lists, poll tax lists create a census substitute and are especially useful to differentiate men with the same name as the clerk

will usually add some identifier such as residence or physical characteristic.

Excluded from the poll tax were ministers, children, slaves and indentured servants, paupers, militia officers, tax assessors and those exempted by a colonial or state law for some reason such as reward for military service.

Real property tax lists contain the names of the property owner, acreage, assessed valuation and the amount of tax. Personal property tax lists contain the names of heads of households, males over 16 (or whatever legal age), number of slaves by sex, cattle, horses, and sometimes other types of personal property. Sometimes real property and personal property lists are combined.

### Land Records

Land was controlled by either the English monarch through a governor or through a private citizen or group of citizens or by a corporation. Land was acquired from the government by first filing a *petition* stating a satisfactory reason such as military service, paying the passage of an immigrant, paying the purchase price or being granted land as a favor. The second step was the issuing of a *warrant* which certified the right to acreage and authorized an official survey. After the *survey* or *plat* was filed, the *patent* or *grant* was issued. The petitions have not usually survived, but the warrants and patents exist as well as many surveys. They are housed in the state archives or land office.

Land was granted to New Englanders as a reward for immigrating to the colonies. Virginia granted acreage as headrights for paying the passage of immigrants to the colony. Many headrights were sold so the person claiming the acreage was not necessarily the person who paid the passage. North Carolina was governed by a representative of the Crown but the land was sold by the proprietors who did not issue headrights (except briefly by the Calverts). Indentured servants were given land at the conclusion of their service.

The boundaries of land parcels were delineated by a system called *metes and bounds*, listing landmarks and the distances between them. Neighboring

landowners were often mentioned and drawing a plat map of your ancestor's property and the adjoining properties can reveal much about possible relatives and associates. There are books that will show you how to draw a plat map, a time-consuming but rewarding project. Platting software is available for the computer.

Remember that in some colonies, the law of *primogeniture* prevailed wherein all the *entailed* (limited in inheritance to a certain class of heirs) real property was inherited by the eldest son. Property which was not entailed or marked as *dower* (widow's share of the estate), could be inherited by other children and heirs. Entailed or dower property was not taxed by the state. Early land records contain other items such as ear marks, animal brands, slave manumissions, apprenticeship papers, petitions, depositions, tax lists and occasionally even vital records such as marriages.

### Apprentice, School and Business Records

The Old World system of binding young people to learn a trade was carried to the colonies. Most apprentices were boys in the pre- or early teens and they were indentured until age twenty-one. The length of the indenture in the document will give an indication of the age when the agreement was signed. Girls were sometimes indentured to learn "housewifely" skills.

Apprentice records and other business records such as account books, licenses and other professional records are usually housed in the town, county or state historical societies or archives. A few have been published, but most exist in manuscript form. The holdings of many of these societies are listed on their web site.

Schools in the colonial period were private and any records that can be located would give valuable information about families. Business records are being discovered in odd places and constitute a major new source for the colonial time period.

### Colonial Legislatures and Courts

In every colony, the proceedings of the governing body were recorded either as

the Archives or the Acts of the Legislature. Court proceedings were likewise recorded. These records have been published and are housed in the state library as well as many other libraries. These records contain the acts passed by the legislature (often to benefit individuals) and the dealings of the courts which mention colonists by name and describe things such as disputes, fines, marriages, divorces, guardianships, grants of privileges, etc.

### Internet Lists

There are some e-mail lists you can join for your particular colony through which researchers can pool information and ask questions. Check [www.cyndislist.com](http://www.cyndislist.com) under your particular state for links to them and for other sites that might include colonial records. Successful Colonial research depends a great deal upon learning the history of the time and place and making friends with the county and state archivists and librarians. Eventually, most of us "stand" at the Atlantic Ocean hoping to cross over to the old country. Your chances of success depend upon your willingness to research the colonial records and glean from them the clues to your families Old World origins. •

## Software of Interest

### World Place Finder Give-Away

World Place Finder is an enormous geographical database of over 3.3 million place names from around the world plus the software to check the locations in your database for spelling and correct syntax. Progeny Software has been selling the software package for a few months. They are now giving away the CD-ROM although there is a charge of \$6.00 for shipping and handling. With the CD-ROM, you can check the towns and cities, counties, and countries anywhere in the world for errors. You can also get the exact longitude and latitude for each of the places. World Place Finder can be ordered free (plus \$6 for US shipping) at: <http://www.progenysoftware.com/placefinder.html> or by calling 1-800-565-0018..

### Pocket Genealogist 2.50

Pocket Genealogist is probably the most powerful genealogy program for handheld computers. A new update contains the following new features:

- A new interface
- Better GEDCOM imports
- Better LDS ordinances support
- Data entry
- Direct import of The Master Genealogist databases including roles and research log
- Faster Synchronization
- Support for "Multi-linked" or witnessed events
- Support for "To Do" lists (if supported on the desktop genealogy program)

Pocket Genealogist can import data from any genealogy program using GEDCOM, but data from Legacy Family Tree databases or The Master Genealogist can be imported directly.

Version 2.50 is a free upgrade to current Pocket Genealogist users. If a user wants to upgrade and change from the "Basic" to "Advanced" version to take advantage of new features, the cost is \$15. For more information or to download the Pocket Genealogist, go to: <http://www.NorthernHillsSoftware.com>

## Classes ~

October 11, 2003

### PAF 4 & 5 Classes

- Getting Started Using PAF
- PAF5 Preferences and Tools

### Macintosh Class

- Setting up Virtual PC on a Mac

### General Classes

- Scrapbooking
- Getting Started on the Internet
- Creating a Web Site
- Questions & Answers

## Quotable Quote

Lack of pep is often mistaken for patience.

Frank McKinley Hubbard 1868-1938  
*American Newspaper Humorist*

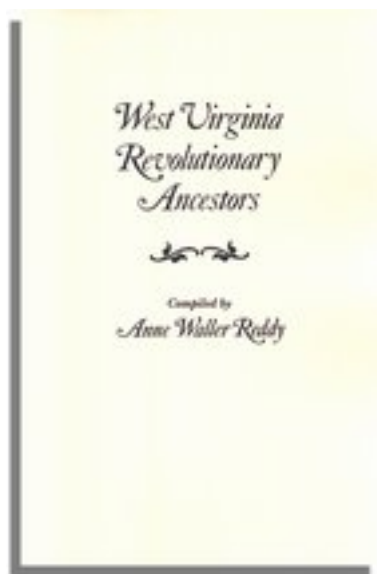
## Recently Published

### Old Families Of Staten Island



*Old Families Of Staten Island* is excerpted from the book, *The Annals of Staten Island From Its Discovery to the Present Time*, by J. .R. Clute. It contains concise genealogical essays or notes on eighty early Staten Island families. *Old Families Of Staten Island* is 103 pages and sells for \$16.50. For more information, go to: [http://www.genealogical.com/item\\_detail.asp?ID=9055](http://www.genealogical.com/item_detail.asp?ID=9055)

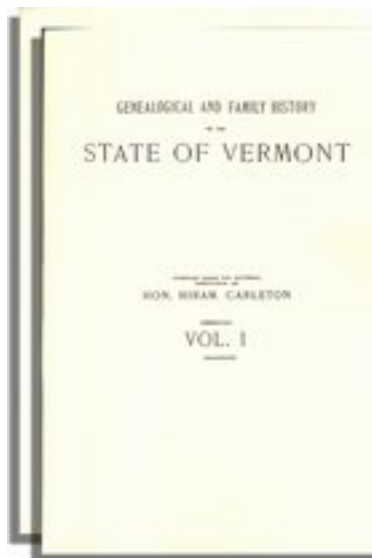
### West Virginia Revolutionary Ancestors



*West Virginia Revolutionary Ancestors* lists the names of approximately 2,000 West Virginian Revolutionary War veterans whose Public Claims are on record in manuscripts at the Virginia State Library. This list was compiled for the benefit of those who desire to trace ancestors who gave service in the Revolutionary War but whose names do not appear in the published indexes and rolls of Revolutionary soldiers and sailors. Each patriot is identified by name and county of residence. *West Virginia Revolutionary Ancestors* is 93 pages and sells for \$14.50. For more information, go to:

[http://www.genealogical.com/item\\_detail.asp?ID=4820](http://www.genealogical.com/item_detail.asp?ID=4820)

### Genealogical And Family History Of The State Of Vermont



*Genealogical And Family History Of The State Of Vermont*, by Hiram Carleton, a prominent Vermont judge and six-time president of the Vermont Historical Society, is an authoritative two-volume collection of illustrated biographical/genealogical essays of noted Vermont citizens and their families. The book was commissioned by the Lewis Publishing Company and was originally published in 1903. The book follows a pattern used successfully by the publisher for

many similar books to follow. A biography of a contemporary leading citizen, usually with a picture, introduces the family. This is often followed by the family history, which is traced forward from the oldest known ancestor of the line down to the family member. Many of the lineages are traced to 16th-century England, while others have connections to Massachusetts and other nearby states.

*Genealogical And Family History Of The State Of Vermont* comes in two volumes which have 720 and 754 pages respectively and sell for \$149.95. For more information, go to:

[http://www.genealogical.com/item\\_detail.asp?ID=9322](http://www.genealogical.com/item_detail.asp?ID=9322)

### San Francisco Ship Passenger Lists

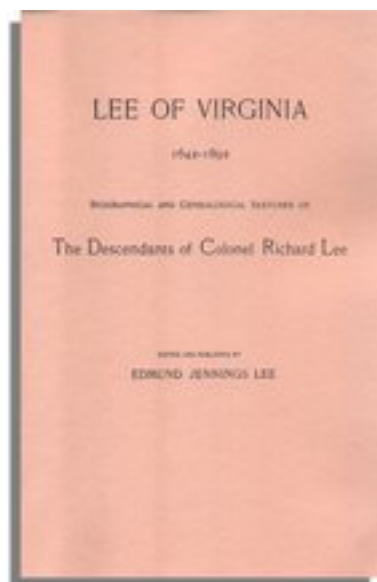


*San Francisco Ship Passenger Lists, Vol. III*, by Louis Rasmussen, covers passengers arriving between November 7, 1851 and June 17, 1852. During this time, approximately 25,000 persons arrived at the port of San Francisco. For this seven-month period nearly 50% more passengers arrived than arrived for the preceding 18 months because of the gold rush. Since the passenger lists for the port were destroyed by fire in 1940, the

author has undertaken a very ambitious project of reconstructing the lists from newspapers and journals. The list of passengers sometimes identifies accompanying family members. The book also has a key to abbreviations, a list of the shipping lines that sailed or steamed on the Pacific, various addenda and corrigenda, and name and subject indexes. *San Francisco Ship Passenger Lists, Vol. III* is 460 pages and sells for \$47.50. For more information, go to:

[http://www.genealogical.com/item\\_detail.asp?ID=9789](http://www.genealogical.com/item_detail.asp?ID=9789)

#### Lee Of Virginia



*Lee Of Virginia, 1642-1892*, is about the Lee family of Virginia, one of the most distinguished families in America. From this family came greater numbers of Revolutionary and Civil War generals and officers, politicians, and statesmen than any family of comparable size and standing. This book was written to collect and preserve the history of Colonel Lee's posterity. It would be not only of interest to descendents of the Lee family, but also to all students of American history. *Lee Of Virginia, 1642-1892* is 586 pages and sells

for \$49.95. For more information, go to:

[http://www.genealogical.com/item\\_detail.asp?ID=3310](http://www.genealogical.com/item_detail.asp?ID=3310)

---

## News of the Weird

### The Elephant Man

Joseph Merrick was known as the Elephant Man, a circus freak who carried a bulbous growths that disfigured his body and face. A New Zealand television producer has now created a program to reveal what this man would have looked like without the disfiguration. A NHNZ (Natural History NZ) documentary team which included genealogists and DNA experts were able to determine how Merrick may have looked if he had not been ill. An artist's drawing of Joseph Merrick as he could have been is on the Web at:

<http://www.stuff.co.nz/stuff/0,2106,2589463a11,00.html>

### The Antique Ghost Show

A new Canadian television show wants to tell all about antiques selected for the program. Derek Acorah, a well-known psychic from England, and a crew of experts in art, genealogy, and history, make up the cast. The Antique Ghost airs every Sunday at 8 PM Eastern Time on Bravo!, a Canadian channel. Derek claims the power to "see" the history of an antique by tapping into emotional vibrations locked within. After he gives readings for the objects, the psychic returns to the stage and shares his report from beyond. The team of expert heirloom authorities, genealogists, and historians then hit the road to verify his findings. They may uncover new and interesting details about the antique and the people who once owned it. Perhaps an artifact from a branch of your family that you have been unable to trace could get you on the show and

result in a generation or two of previously undiscovered family history. Then again, you may believe psychics are a fraud and could not accept the results. •

---

## Software of Interest

*Continued from page 71*

### Heredis

Heredis is a French program for genealogists which is in development. The developer is looking for individuals to test a beta version of the English edition of Heredis which operates using Mac OS X. If anyone would like to help with the testing, they can contact the company at:

<http://www.heredis.com/newhome/yheredis.asp>.

### GenBridge and Ancestry Family Tree

Genbridge is a format for importing data from other genealogy programs designed to replace GEDCOM. This format has recently been added to Ancestry Family Tree, a genealogy program marketed by MyFamily.com. This feature makes the import of files from Family Tree Maker, The Master Genealogist, and other software packages using Genbridge much more reliable..

Ancestry Family Tree is unique because of the integration with Ancestry World Tree, an Ancestry.com online database. The user can quickly see ancestors in the database as individuals are entered or downloaded. Online Ancestry World Tree files are automatically searched and, if correct, entire branches of the family tree can be automatically imported and added to the users database.

Ancestry Family Tree is a free program. For more information about Ancestry Family Tree, go to: <http://aft.ancestry.com/aftexec?htx=main&r=0>

### CookBook Maker 2000

This is not a genealogy program, but there may be some heirloom recipes in your family that your great-grandmother used. CookBook Maker is a program to publish recipes using a template to maintain a standard format for all the recipes. The recipes can be organized in as many as 25 categories. You can include information about the source of the recipe or other interesting notes about the history of the recipe. If you have a large family organization or a lot of recipes, CookBook Maker can help publish your recipes and do it with a bit of family heritage.

CookBook Maker 2000 operates with Microsoft Windows® 95, 98, ME, 2000, or XP. It sells for \$34.95, including shipping. For more information, or to order online, go to: <http://virginlake.com/>

•

---

## Spiderwebs

*Continued from page 66*

### Making a Tombstone Rubbing

A “rubbing” of an ancestor’s tombstone can become a family heirloom. Unfortunately, older tombstones are so fragile that you should never create rubbings, according to the experts. Even newer stones can easily be damaged if the rubbings are not properly done. Even photography can create controversy from the experts. People would fill the engraving on a tombstone with shaving cream to improve contrast for a better photograph. The experts now say that some shaving creams contain chemicals that can damage tombstones. Other experts say that this is nonsense.

The Association for Gravestone Studies, a group dedicated to finding the right answers has a Web

site where you can learn all about rubbings and photography of tombstones. This group will study the history as well as the chemistry, the environment, and other factors that influence old tombstones. Among the group are experts in the photography techniques required to capture tombstones on film.

Visit this site at:

<http://www.gravestonestudies.org/faq.htm>

### Genealogics.org

Leo van de Pas, an Australian genealogist, has created an impressive database with more than 400,000 individuals. The impressive part is that he has documentation for every entry. Some of the documentation is not online. He uses a program that will not let him enter an individual until the sources are included with the entry. Much of the database is medieval genealogy. See his site at:

<http://www.genealogics.org>

### Nuremberg Records Web Site

The Harvard Law School plans to post more than one-million documents from the Nuremberg Trials regarding the war crimes of Adolf Hitler’s Third Reich on the Internet. More than 6,700 pages of material from one of the trials involving 23 defendants accused of doing harmful or fatal medical experiments on humans is already posted on the site. The trials began in late 1945 and continued until 1949. To visit this site, go to:

<http://nuremberg.law.harvard.edu>

---

## Events

The events listed here are some of the major events that may be of interest to our members who may be travelling or vacationing, live nearby, or who may want to travel to attend an event.

### Maryland Workshop

A workshop at the Baltimore Maryland Stake Family History Center in Baltimore, MD on September 20 has more than 50 free classes in family history research. Topics of interest to beginners and experienced researchers include computer research; U.S., Maryland, Virginia, Pennsylvania, and Washington D.C. and foreign research. E-mail: [BaltoFamilyHistory@worldnet.att.net](mailto:BaltoFamilyHistory@worldnet.att.net)

### Find Your Family in New York

A two-day Conference for New York Researchers sponsored by The New York Genealogical & Biographical Society and the Western New York Genealogical Society will be held on September 25-27 in Buffalo, NY. For details, see:

<http://www.nygbs.org/ed/programs.html>

### Canada Conference

The British Isles Family History Society of Greater Ottawa will hold its 9<sup>th</sup> annual conference on September 26-28 in Ottawa. There are twenty-one presentations which include Fawn Stratford-Devai, noted author and lecturer on Ontario genealogical and historical topics and Chad Gaffield, Professor of History, University of Ottawa. For details, go to: <http://www.bifhsgo.ca>

### Workshop for Writers

The San Mateo County Genealogical Society will hold a workshop for writers and would-be writers by Steven Friedman, an author and teacher, on September 27 at San Mateo, CA.

<http://www.smcgs.org>

---

### Fall Foliage Tour

The California Genealogical Society will hold a New England/Canada fall foliage cruise with genealogical lectures by George F. Sanborn Jr. The 10-day cruise sails October 1 on a round trip from Boston with stops in Maine, Nova Scotia, Quebec and New Brunswick. [library@calgensoc.org](mailto:library@calgensoc.org)

### Polish Genealogical Society Conference

The Polish Genealogy Society annual conference will be held from October 3 to 5 at Rosemont, Illinois. <http://www.pgsa.org>

### New York City Fair

The Archivists Round Table will hold the free annual Family History Fair on October 12 in New York City. For details, go to: <http://www.nycarchivists.org/fhf.html>

### California Conference

The San Francisco Bay Region of the California State Genealogical Alliance will host a California Conference on Oct. 17-19 at Foster City, California. The conference will cover California records, record preservation and research methodology. On Friday and Sunday there will be guided field trips and indoor workshops on photo preservation, cemetery research, organizing a research project and hands on preservation techniques. [http://users.lmi.net/catch/ca\\_conf](http://users.lmi.net/catch/ca_conf)

### Cyndi Howells Seminar

The Arkansas Genealogical Society Fall Seminar on October 17-18 in Little Rock, Arkansas, will feature: Cyndi Howells. <http://www.rootsweb.com/~args/>

### Stockton, California Fair

The Stockton California Family History Center will hold a free family history fair on October 18. The fair will feature Grandma's Attic, computer related genealogy, journals, newspapers, old pictures, poetry, quilts, scrapbooking, software, spinning, tating, ancestral stories, and a royal genealogies database. For more information, go to: [stocktonfh@yahoo.com](mailto:stocktonfh@yahoo.com)

### Computers in Family History Conference

The Computers in Family History Conference, sponsored the Sussex Family History Group and Society of Genealogists (SoG) will be held on October 18 at Worthing, England. See: <http://www.sog.org.uk/events/conference2003.html>

### British Columbia Seminars

A free family history seminar at Surrey, British Columbia on October 18 will have 38 classes including Nonconformist Records for English Family History, Your Ancestors and the Poor Law, familysearch.org, ancestry.com. PAF - Illustrating Family History, PAF - Sources and Notes, Right Forest/Wrong Tree, Peccadillos of Patronymics. [lmcgonigal@shaw.ca](mailto:lmcgonigal@shaw.ca)

The Abbotsford Genealogical Society will hold a family history seminar at Abbotsford, British Columbia on October 25. It includes twenty lectures, five demonstrations, and a market place. <http://www.rootsweb.com/~bcags>

### Virginia Genealogy Conference

The Virginia Genealogical Society and Fairfax Genealogical Society will hold a conference on October 25 at Herndon, Virginia. There are 12 lectures on research in Pennsylvania, Maryland, West Virginia, Kentucky, North Carolina, and the National Capitol area. E-mail: [mail@vgs.org](mailto:mail@vgs.org)

### Southern Genealogy Workshop

The Southern Genealogist's Exchange Society will hold a genealogy workshop featuring Linda Ellwood, who will cover East Florida researching in 1763 – 1821, and Linda Rosenblatt, who will discuss military research on the southeast coast. The workshop will be on November 1 at Jacksonville, Florida. For details, e-mail [sgesjax@juno.com](mailto:sgesjax@juno.com)

### San Mateo, California Fall Seminar

The San Mateo County Genealogical Society will hold a fall seminar featuring Hank Jones, author of "Psychic Roots", "More Psychic Roots" and five books on early Palatine emigrants to the United States on November 1 in San Mateo, CA. For details, go to: <http://www.smccgs.org>

### New England Regional Genealogical Conference

Sharon DeBartolo Carmack, John Philip Colletta, Maureen A. Taylor, Dick Eastman, and Pamela Clark Cerutti are featured speakers at this conference held on November 6-9 at North Falmouth, Massachusetts. [www.rootsweb.com/~manercg](http://www.rootsweb.com/~manercg)

### GENTECH2004

The National Genealogical Society and the St. Louis Genealogical Society will hold the GENTECH 2004 conference in St. Louis, Missouri on January 22-24, 2004. [www.stlgs.org/gentech2004/](http://www.stlgs.org/gentech2004/)

### Genealogy Tour of Ireland

A one-week research trip to Dublin, Ireland, for serious researchers sponsored by Celtic Quest, LLC will be held March 20-27, 2004. Richard M. Doherty, Elizabeth Kelley Kerstens, CGRS, CGL, and Marie Varrelman Melchiori, CGRS, CGL, experienced researchers will

hold introductory classes to the local repositories on Sunday and Monday, and then be strategically located at repositories to assist researchers. Registration information is found at [www.celticquest.net](http://www.celticquest.net) or you can request a brochure by e-mail at: [marie@celticquest.net](mailto:marie@celticquest.net)

### **Elizabeth Shown Mills Seminar**

An all-day seminar sponsored by the Sonoma County Genealogical Society will be held on April 24, 2004 at Rohnert Park, California. <http://www.rootsweb.com/~cascgs/mills.htm>

### **3 R's of Family History**

The Toronto Branch of the Ontario Genealogical Society will host an

annual seminar on May 27-30, 2004 in Toronto, Canada. The theme is "The 3 R's of Family History: Resources, Research, Results." There are three streams of interest available:

- Methodology
- Technology
- Toronto, Ontario, and Canadian research

plus topics such as Society Management, genetics/DNA, and others.

<http://www.ogsseminar.org> •

---



## OFFICERS AND STAFF

Allin Kingsbury	President
Richard Rands	Vice President
Lesly Klippel	Secretary
Carleen Foster	Treasurer
Lesly Klippel	Membership Director
Alice Malquist	Historical Secretary
Carol Harless	Genealogy Advisor
Lynn Melville	Genealogy Advisor
Howard Bennion	Mac Leader
Janet Brigham Rands	Webmaster
Mary Lou Harline	Genealogy Advisor
Leland Osburn	Program Coordinator
Allin Kingsbury	<i>PAFinder</i> Editor
Mary Lou Harline	Assistant Editor
Margaret Mitchell	Assistant Editor
Pauline Lee	<i>PAFinder</i> Distribution
Clara Smith	<i>PAFinder</i> Back Issues
Barbara Kopel	<i>PAFinder</i> Mailing
Richard Kopel	<i>PAFinder</i> Mailing

Copyright Notice: *PAFinder* © 2003 Silicon Valley PAF Users Group. All Rights Reserved. No articles herein may be reproduced for profit or commercial purpose without the express written consent of the editor or the Silicon Valley PAF Users Group. Other PAF users groups may republish articles but must include credits to the authors and the Silicon Valley PAF Users Group.

*PAFinder* is the official publication of the Silicon Valley PAF Users Group, a nonprofit organization. Published monthly, *PAFinder* is distributed at the door to all members attending the meeting, and mailed to others after the meeting. Members may elect to receive the newsletter by e-mail.

Articles contributed by readers are welcomed. Articles may be submitted as a text file on PC compatible disk, CD-ROM, or as an e-mail attachment. The editors reserve the right to accept, reject, or otherwise edit articles for publication. Articles are not returned.

## Silicon Valley PAF Users Group

[www.svpafug.org](http://www.svpafug.org)

Allin Kingsbury, President 408 257 8447

[Allin8@juno.com](mailto:Allin8@juno.com)

Please send inquiries, address changes, new memberships, and membership renewals to:  
SV-PAF-UG, P.O. Box 23670, San Jose, CA 95153-3670 or  
[Leslyk@earthlink.net](mailto:Leslyk@earthlink.net)

SV-PAF-UG meets monthly, except December, on the second Saturday of the month from 9 to 11 a.m. at the Church of Jesus Christ of Latter-day Saints building, 875 Quince Avenue, Santa Clara, CA. We offer classes and sponsor guest speakers at meetings to help family historians with computer technology and research techniques. Membership dues are \$15 per year (\$20 for Canada and \$25 for other international). Members are offered classes at meetings, mentor help, *PAFinder* (a monthly newsletter published each month there is a meeting), and occasional publications by the group.

### Please Contact:

Membership	Lesly Klippel <a href="mailto:Leslyk@earthlink.net">Leslyk@earthlink.net</a>
Newsletter	Allin Kingsbury <a href="mailto:Allin8@juno.com">Allin8@juno.com</a> 408 257 8447
Mentor Program	Robert White <a href="mailto:computer-bob@mindspring.com">computer-bob@mindspring.com</a> 408 733 4686
Classes	Leland Osburn 408 243 8348
Questions	Dr. PAF <a href="mailto:mlharline@aol.com">mlharline@aol.com</a>

### The following can be ordered from [www.FamilySearch.org](http://www.FamilySearch.org) or at 1-800-537 5950:

Personal Ancestral File 2.3.1 Macintosh (diskette or CD version)	\$10
Personal Ancestral File 3.01M MS-DOS (diskette version)	\$15
Personal Ancestral File 4.0.4 Windows (CD version)	\$6
Personal Ancestral File 5.1 Windows (CD version)	\$6
Personal Ancestral File Companion 5.0 Windows (CD version)	\$13.50
Personal Ancestral File 4.04 and 5.1 downloaded from <a href="http://www.FamilySearch.org">www.FamilySearch.org</a>	free

### The following can be ordered from SV-PAF-UG:

<i>PAFinder</i> back issues if available, per issue	\$1 (order by mail or purchase at meetings)
Videos of classes	see <a href="http://www.svpafug.org">www.svpafug.org</a> for titles and prices
<i>Family History Documentation Guidelines</i>	\$10 (see <a href="http://www.svpafug.org">www.svpafug.org</a> for volume price)