

PAF for Palm OS

**It's free, it's easy,
and it fits in your pocket**



Introduction

Imagine taking your PAF 5 database with you to the library or to a family gathering...in your pocket. That's what you can do with the free, downloadable PAF for Palm program. If you have any of the various Palm Operating System (Palm OS) handheld computers, you can easily export all or part of your PAF 5 database.

For a review of PAF for Palm, visit this Website: www.svpafug.org/handhelds.html. For step-by-step help in using PAF for Palm, keep reading!



Contents

- Downloading and Installing PAF for Palm
- Creating and downloading a PAF for Palm database
- Deleting a PAF for Palm database
- Comparing PAF 5 and PAF for Palm
- Navigating PAF for Palm
- How to find information in PAF for Palm
- Beaming a PAF for Palm database between handhelds
- Some final PAF for Palm tips
- One final tip on HotSync

Downloading and Installing PAF for Palm



Where Do I download PAF for Palm?

THE CHURCH OF JESUS CHRIST OF LATTER-DAY SAINTS

FAMILYSEARCH™

Browse Catalog | Shopping Cart | Shopper Registration | Address Book | Order Status | Logon | Search | Help

PAF 5.1.12 Download Instructions and Options

PAF 5.1 is now available in more than one language. You can download the program in one language and add additional languages as needed, or [download one file with all languages and options](#).

You can type names and other information in any language in PAF 5.1. However, to see the program screens and reports in one of the languages, you will need that language.

- PAF 5.1 in One Language -

To download PAF 5.1:

1. Click the download button for the program in the language you want.
2. Select and write down the location where you want to save the file.
3. After the file is downloaded, go to that location and double-click the file you downloaded.

Each file includes a user's guide.

English	Download	(Size: 9.7 MB)
German	Download	(Size: 10.1 MB)
Japanese	Download	(Size: 10.2 MB)
Chinese	Download	(Size: 9.8 MB)
Korean	Download	(Size: 10.3 MB)
Swedish	Download	(Size: 10.0 MB)

It's not here!

- Other Options -

Download Lessons (English only). [Download](#) (Size: 8.5 MB)
The lessons are available to download or to view online. To use the lessons select **Lessons** from the PAF 5.1 **Help** menu. To see what the lessons look like, [click here](#).

Download International Font. [Download](#) (Size: 11 MB)
This font or another Unicode font is needed to display characters from languages such as Japanese, Chinese, and Korean. During installation this font will be copied to the Windows Font Folder.

- All in One -

All Languages and Options. [Download](#) (Size: 38.9 MB)
This includes program files for English, German, Japanese, Chinese, Korean, and Swedish; the user's guides; lessons (English only); and international font. Use only if you have a high-speed Internet connection, such as DSL.

Also available:
PAF data viewer for Palm handhelds. [Download](#) (Size: KB)

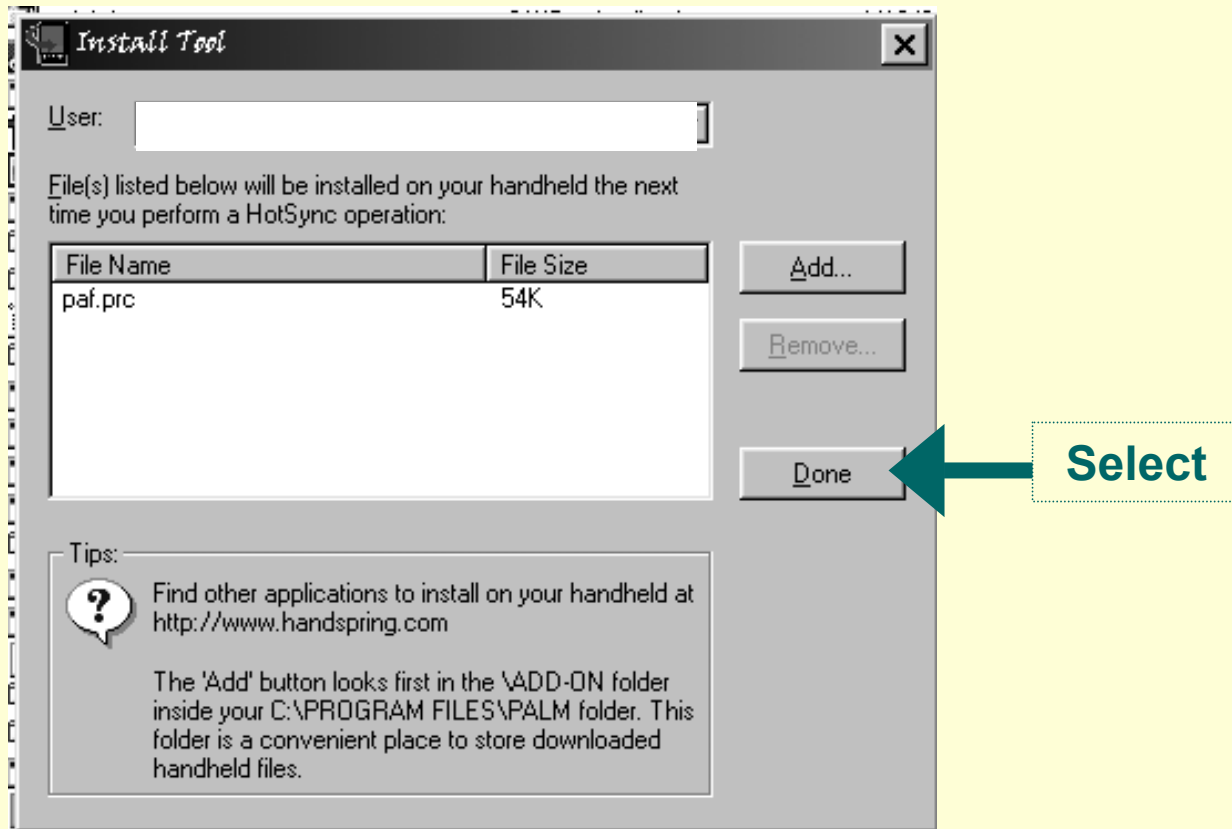
The Personal Ancestral File 5.0 User's Guide is in the Adobe PDF format and requires Adobe Acrobat Reader 3.0 or later to view. If you need the reader, click [here](#) to download it free.

If the download is interrupted (that is, lost phone connection), you will need to return to this page to begin the download again. You may want to bookmark this page with your web browser in case you decide to download other files later.

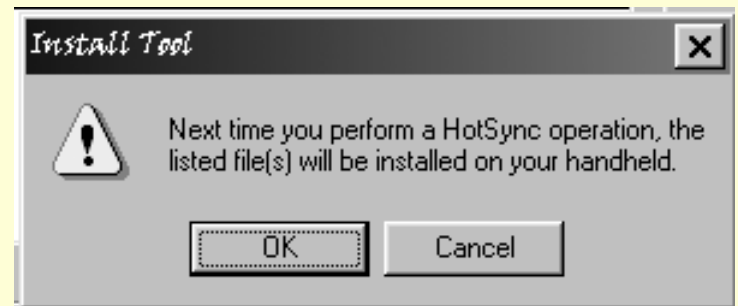
It's here

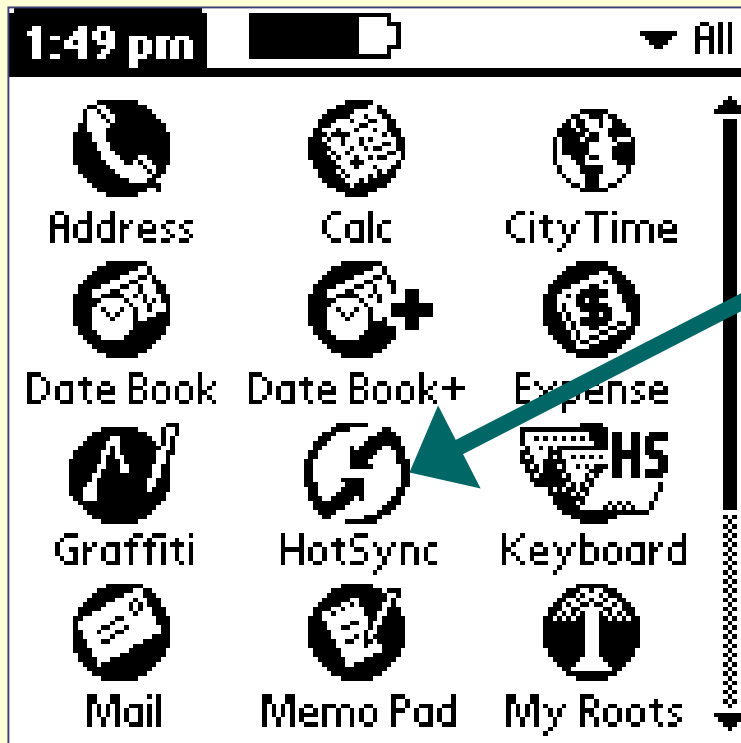
The first question people have about PAF for Palm is where to find it. Occasionally, visitors to the PAF 5 download page at www.familysearch.org can't find the PAF for Palm download. The problem is that they're not scrolling down far enough. It's near the bottom of the page.

Once you click on the file's *Download* button and download it to your computer, install it by double-clicking on the icon for [paf.prc](#) in your PC's downloads area (typically My Download Files or an equivalent).

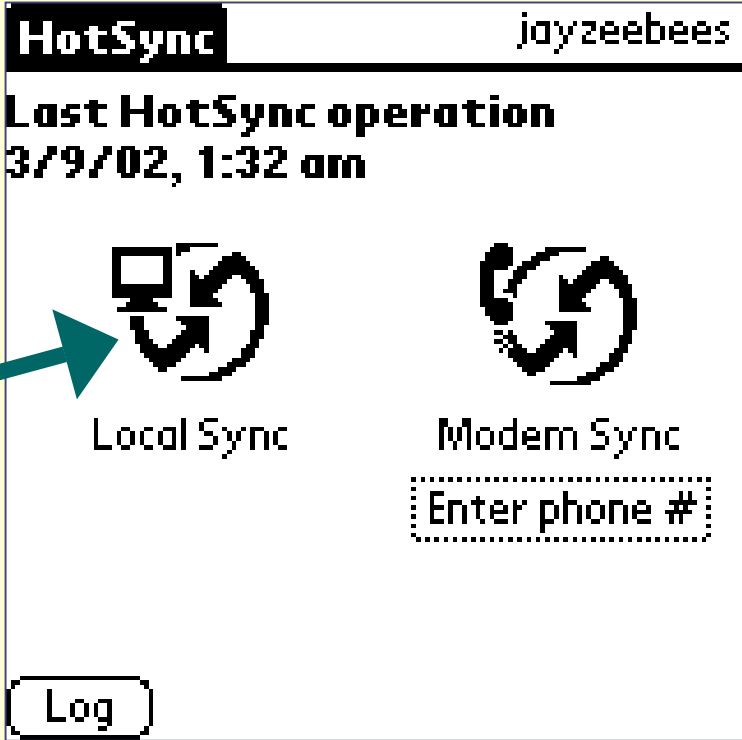


PAF for Palm automatically installs itself in the Install Tool of your Palm OS desktop software. The next time you do a HotSync, it will install itself automatically on your handheld. You will get the message at right:





Click



Click

Now, connect your handheld to your PC and click on the HotSync icon (above). On the HotSync screen (at right), click on the Local Sync icon (if you are connected by a cable or HotSync cradle).

Voilà!



Once the program is installed, the PAF for Palm icon will show up on the menu list of your handheld.

Creating and Downloading a PAF for Palm Database

Even though your program is installed, there is nothing yet for you to view in your PAF for Palm program. You need to create a database to download.

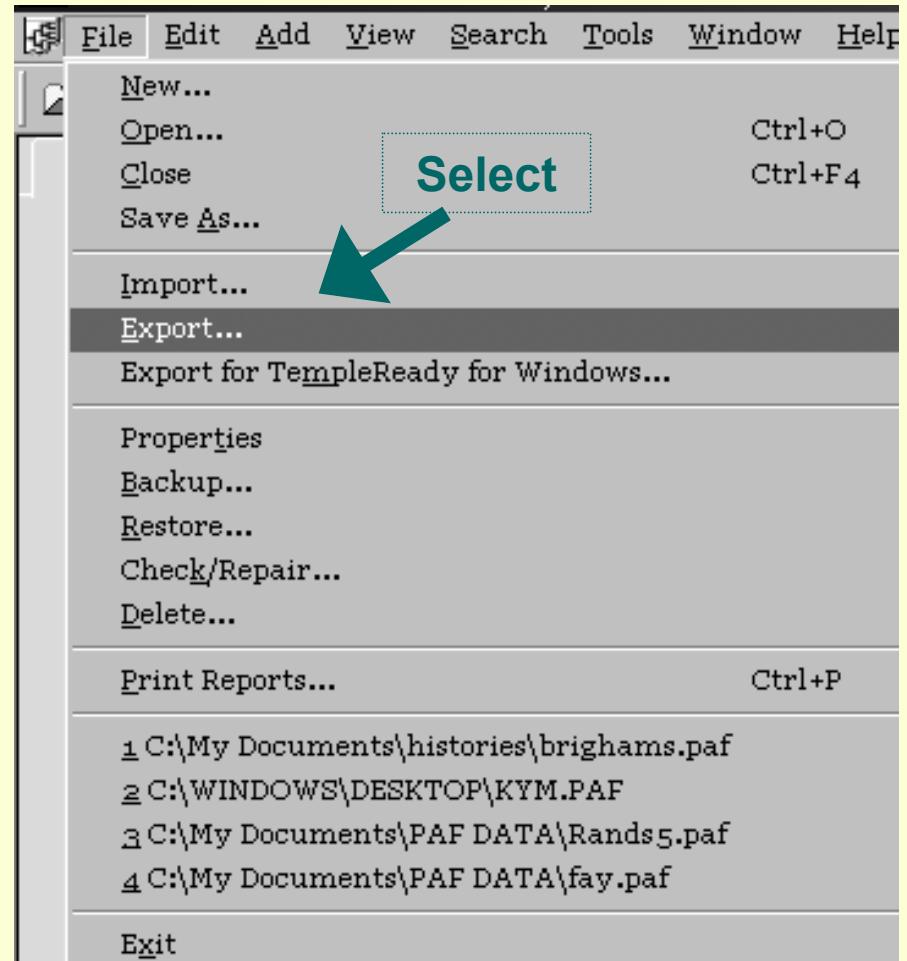
Inside PAF 5, select *Export* from the *File* pull-down menu.

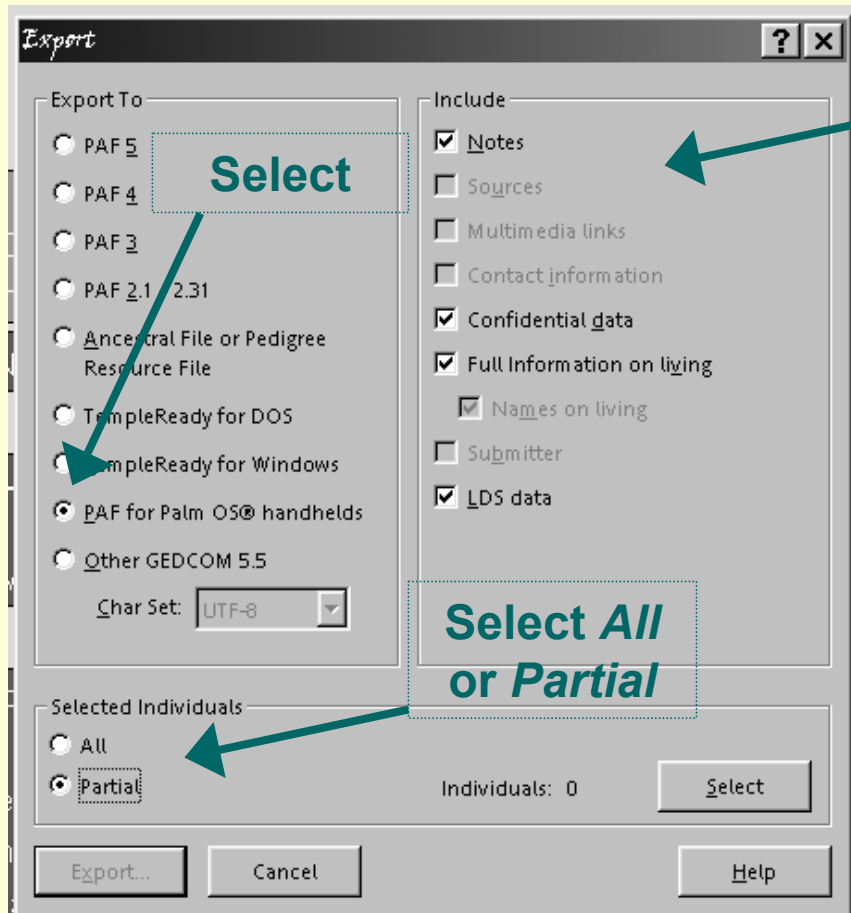
Note: PAF for Palm alphabetizes all-uppercase names separately from upper-and-lower-case names.

If your PAF 5 database has a mixture of all-uppercase surnames (e.g., *JONES*) and upper-and-lower-case surnames (e.g., *Jones*), make the surname capitalization consistent before you export.

If these capitalization styles are mixed, go to the *Tools* pull-down menu, select *Preferences*, and click on the *Names* tab. Make the names consistent by clicking (or unclicking) *Capitalize surnames on screens and reports*.

We don't know if this is a bug or a feature, but in any case, it's a reality.





Choose the options you want

Choose the *PAF for Palm OS handhelds* option. Decide whether you want to download Notes, Confidential data, Full information on living, and LDS data. Also, decide if you want to download your entire database or just part of it (*All or Partial*).

For most uses, you probably will find it easier to work with part of your database on a handheld, because handheld navigation is not as easy as navigation in PAF 5. A large database of thousands of names loads and runs slowly.

You can download multiple databases to your handheld; the size of the handheld's memory capacity is the primary limitation on the size and number of databases.

Note: PAF for Palm does not download Sources from PAF 5, only Notes.

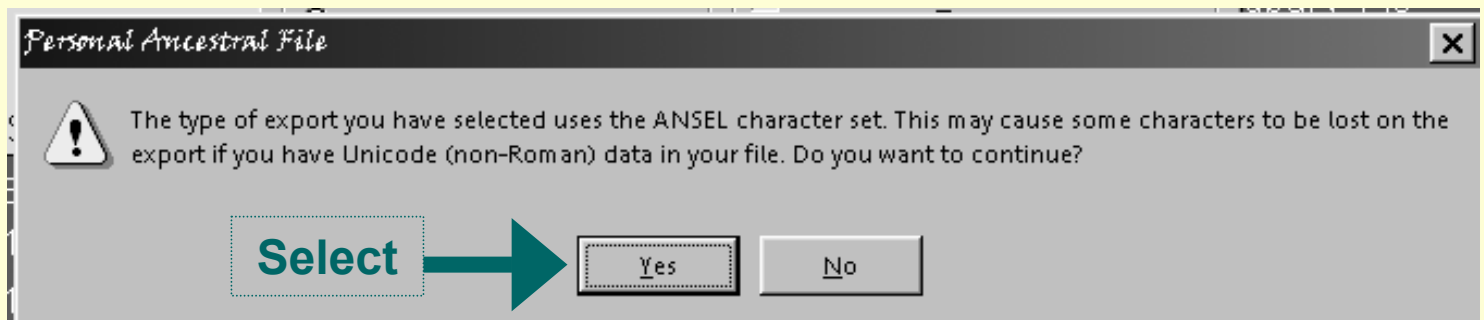


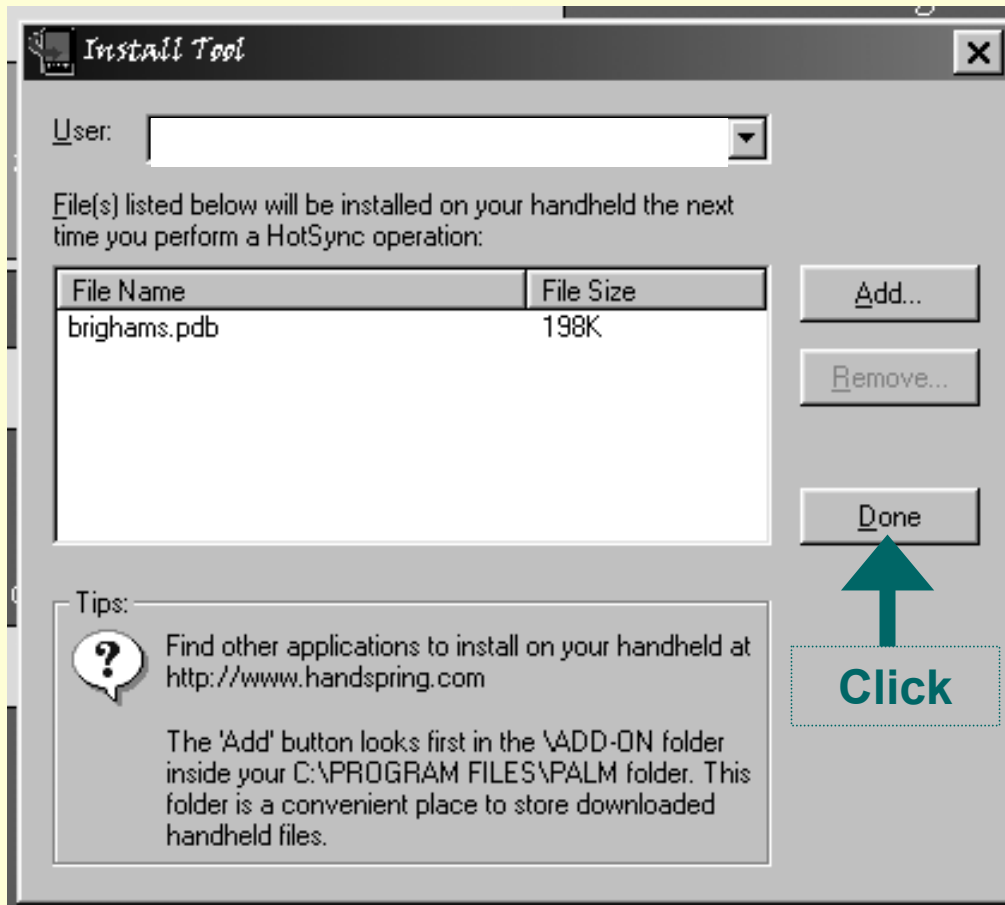
Once you've either chosen *All* or *Partial* (and, if you've chosen *Partial*, you've used the *Select* function to identify what data to download), click *Export*.

PAF 5 will then warn you (below) that you've selected a character set that might not include all the characters in your database. Since you have no real option, tap *Yes*.

PAF then begins exporting. When it's done, it states how many individuals and marriages it exported.

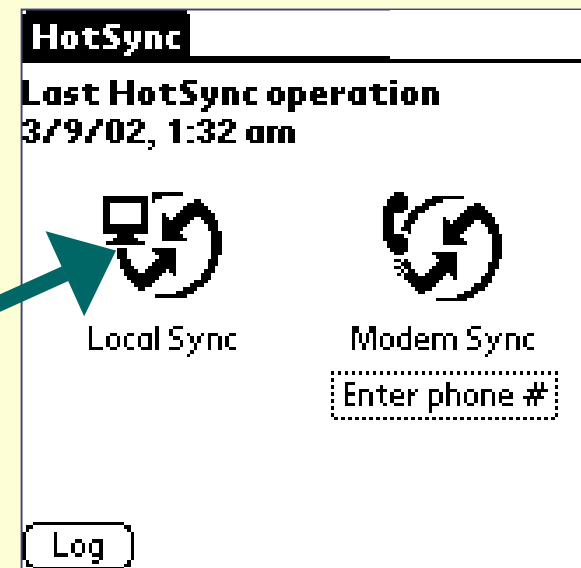
The next process can take a minute or so. Be patient and wait for it to finish. Don't click any buttons while waiting!

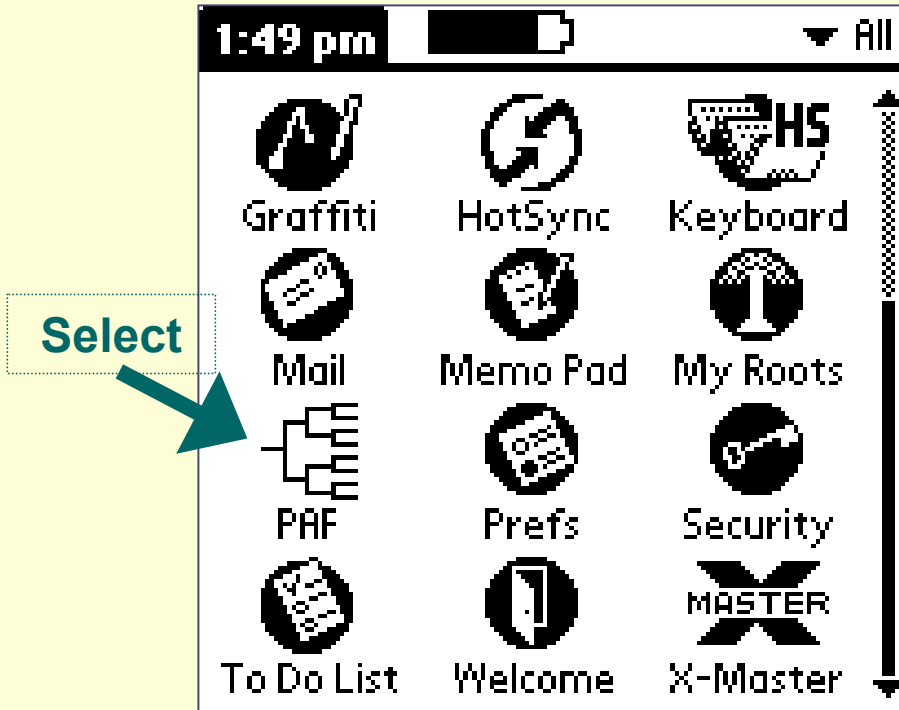




PAF automatically places the exported database in the Install Tool area on your PC's Palm Desktop, so that the next time you HotSync your handheld and your PC, the program will install the database on your handheld.

Next, you will HotSync:





Note: If you have more than one database downloaded to your handheld, PAF for Palm will open to a list of your databases. You can then select one to open.

Next, tap on the *PAF* icon on your handheld. If you have only one database in your handheld, this will open your database.

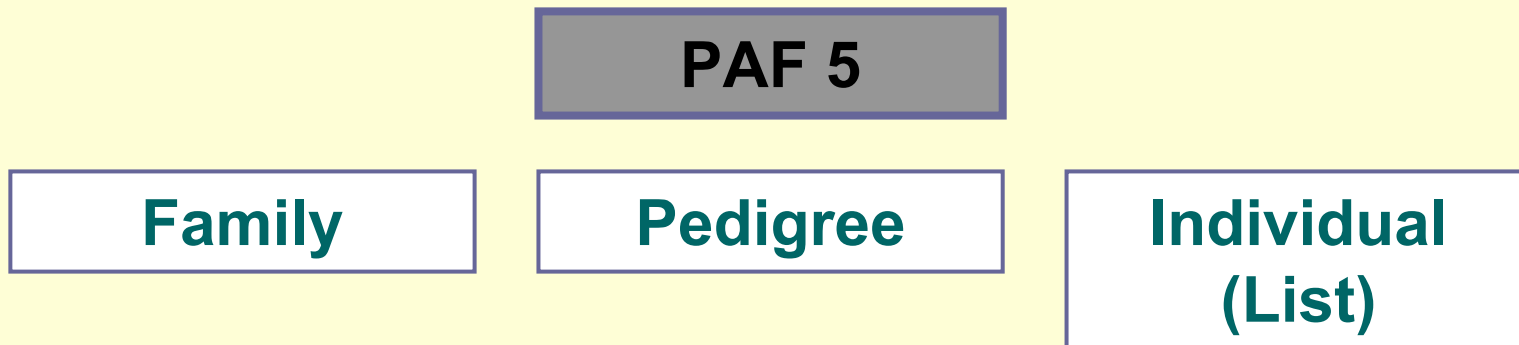
PAF automatically gives an exported PAF for Palm database the same name as the PAF 5 file from which it is created. This is problematic if you want to create multiple handheld databases from the same PAF 5 file.

To create more than one small database from your PAF 5 database, you will need to use the PAF 5 'Save As' feature (from the File pull-down menu) to make a copy of your PAF 5 database with a different name. You can delete this copy of the file later; for now, give the new copy of the file a name that will help you identify the database you are creating from it.

Next, create the new PAF for Palm database to export to your handheld. At this point, you can delete the copy of your PAF 5 database.

Deleting a PAF for Palm Database

Comparing PAF 5 and PAF for Palm



PAF for Palm is a program that runs an exported PAF database on a Palm Operating System handheld computer.

Although the names, dates, places, and notes you export replicate those in a PAF 5 database, the structure of information on a Palm OS handheld doesn't exactly replicate the PAF 5 screens, listed here – Family View, Pedigree View, and Individual (List) View.

PAF 5

Family

Pedigree

Individual
(List)

Edit Individual

This is how the views of PAF 5 and PAF for Palm compare.

The Family Views are quite similar in content. The Individual or List views are somewhat similar.

The Pedigree View in PAF 5 has a rough equivalent in the Ancestors and Descendants screens in PAF for Palm.

The Individual Detail View in PAF for Palm is somewhat comparable to the Edit Individual screen in PAF 5.

PAF for Palm OS

Family

List

Individual
Detail

Notes

Ancestors

Descendants

Navigating PAF for Palm

- **List View**

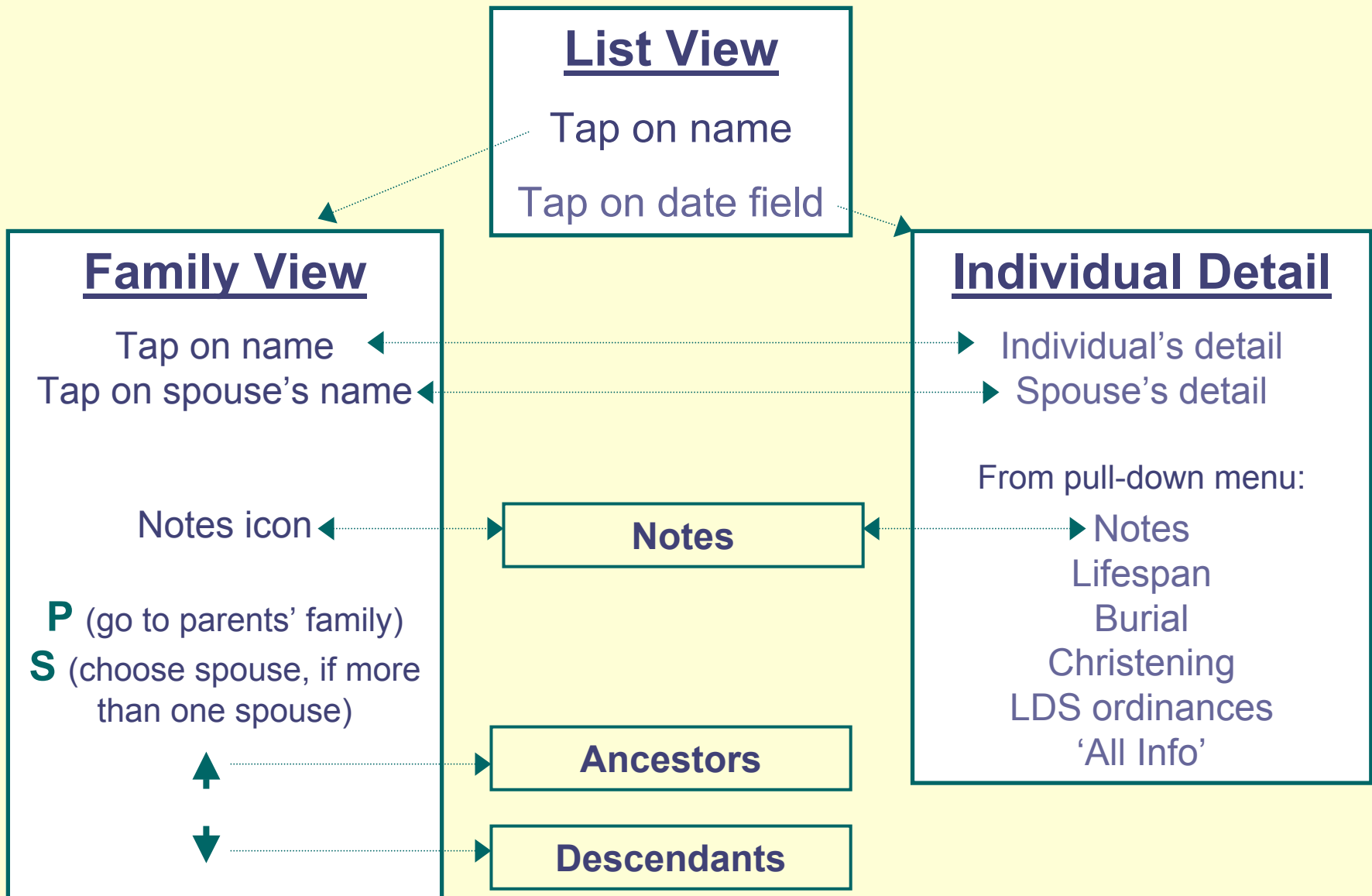
- **Family View**

 - Ancestors and Descendants screens**

- **Individual Detail View**

 - Notes**

These are the pathways you can follow to move between the various views and screens in PAF for Palm. Most screens allow you to return to List or Family view.



List View

Click on a name to go to that individual's Family View

Personal Ancestral File

Brewer, Jonathan	1689-1753
Brewer, Martha	1685-
Brewer, Mary	1679-
Brewer, Sarah	1677-
Brigham, Ann	1606-1675
Brigham, Antipas	-
Brigham, Benjamin Fay	1800-1884
Brigham, Constance	1602-1683
Brigham, Curtis	▪ 1793-1872
Brigham, Curtis	1821-1888

Click on date field to go to the Individual Detail View for that name

1986 people

This is the List View of PAF for Palm.

Click on the NAME to get to the Family View. Click on the DATE FIELD to get to the Individual Detail View.

Click on the little circled letter *i* to get an Information screen with brief instructions.

Individuals with no known surname are included at the end of List as:

– Unknown –, <first name>

You can go to names starting with a certain letter by entering that letter in the Graffiti (or other text entry) area of the handheld.

Family View

Edmund Brigham
12 Aug 1733 — 29 Jun 1806

Sarah Lyscom
27 Dec 1734 — 27 May 1769

m: 2 Nov 1757 F-402

Edmund Brigham 1758-
Hepsibah Brigham 1760-
Roger Brigham 1762-
Samuel Brigham 1763-

List

↑ ↓
P S
↑ ↓
P
↑ ↓
i

Click **P** to see
parents'
Family View

Click **S** to
select a
spouse
(if >1
spouse)

Click to see
spouse's
parents'
Family
View

Click to go
to List
View

Within the Family View, you can navigate to many other screens. Click List to go back to the List View. Click on the P to see the Family View of the parents of either spouse. Click on the S to select a different spouse, if an individual had more than one.

You also can access the Family View for any child listed at the bottom of the screen by clicking on that child's name. Clicking on the date field for the child will take you to the Individual Detail View for the child.

Click up-
arrows to see
Ancestors

Click down-
arrows to see
Descendants



Edmund Brigham	12 Aug 1733 — 29 Jun 1806	↑ ↓	(P) (S)
Sarah Lyscom	27 Dec 1734 — 27 May 1769	↑ ↓	(P)
m: 2 Nov 1757	F-402		
Edmund Brigham	1758-	↑ ↓	
Hepsibah Brigham	1760-		
Roger Brigham	1762-		
Samuel Brigham	1763-		
List			(i)

To see several generations in the Ancestors screen, click on one of the up-arrows.

To see several generations in the Descendancy screen, click on one of the down-arrows.

Ancestors Screen

This is the Ancestors Screen. To see further ancestors in this line, click on the name of an ancestor who isn't the key individual. Clicking on an ancestor will bring up *that* person's ancestors. The display is limited to three generations at a time.

The little square dot by the date field indicates that the individual has offspring listed in this database.

The screenshot shows a window titled "Ancestors" with a list of names and dates. Annotations on the left side point to specific entries: "Key individual's father" points to "Brigham, Lyscom", "Key individual (3rd generation)" points to "Brigham, Curtis", and "Key individual's mother" points to "Fay, Martha". At the bottom, a "Click to exit" box points to a "Done" button. An information icon (i) is in the bottom right corner.

Ancestors	
- - Brigham, Edmund	▪ 1733-1806
- Brigham, Lyscom	1769-1845
- - Lyscom, Sarah	▪ 1734-1769
→ Brigham, Curtis	1793-1872
- - Fay, Benjamin	▪ 1744-1834
- Fay, Martha	1775-1818
- - Stow, Beulah	▪ 1754-

Click to exit → Done ⓘ

Descendants Screen

The screenshot shows a window titled "Descendants" with a list of names and dates. The list is organized into generations:

- 1st generation:** Brigham, John (1573-1621)
- 2nd generation:** Brigham, Henry (1599-), Brigham, Gillian (1601-), Brigham, Thomas (1603-1653)
- 3rd generation:** - Brigham, Mary (■ 1649-), - Brigham, Thomas (■ 1641-1717), - Brigham, John (1644-), - Brigham, Hannah (1649-), - Brigham, Samuel (1653-), Brigham, Margaret (1605-)

Annotations include:

- An arrow pointing to "Brigham, John" labeled "1st generation".
- A bracket grouping the first three names labeled "2nd generation".
- A bracket grouping the last six names labeled "3rd generation".
- An arrow pointing to "Brigham, Margaret" labeled "Also 2nd generation".
- A "Done" button at the bottom left.
- An information icon (i) at the bottom right.
- A callout box with a green arrow pointing to the "Done" button containing the text "Click to exit".

This is the Descendants screen. You can extend it, as with the Ancestry screen, by clicking on the name of someone with offspring listed in the database.

Click on a 2nd or 3rd generation name with a square dot beside name to see more generations

Individual Detail View

Brigham

Thomas

I-819 (M)

▼ Lifespan

Born: 1603

(Holme-upon-Spalding-Moor,
Yorkshire, England)

Died: 8 Dec 1653 (Cambridge,
Middlesex, Massachusetts)

Family

List

Parents



Lifespan
option
chosen

This is the Individual Detail View.

You can select how much and what kind of information to view by using the little pull-down menu on the screen. This is the Lifespan option.

Notes

Brigham

Curtis

I-55 (M)

▼ Notes

1852: Left his Allegan County, Michigan, home to travel to California for the gold rush. Passenger on steamship Northern Light, sailing from New York City on 20 Dec 1852, traveling via the Nicaragua Route to San Francisco, arriving 17 Jan 1853. Also listed as passenger is his wife's kinsman

Family

List

Parents



Notes
option
chosen

This is another option in the Individual Detail View.

If an entry has Notes from PAF 5, you can select the *Notes* option from the pull-down menu.

The entire Note is included, even long Notes.

Tips

- From the list arrow, select the information that you want displayed.
- To edit a person's data in the built-in Memo Pad application, tap the Menu option, and select Export to Memo.

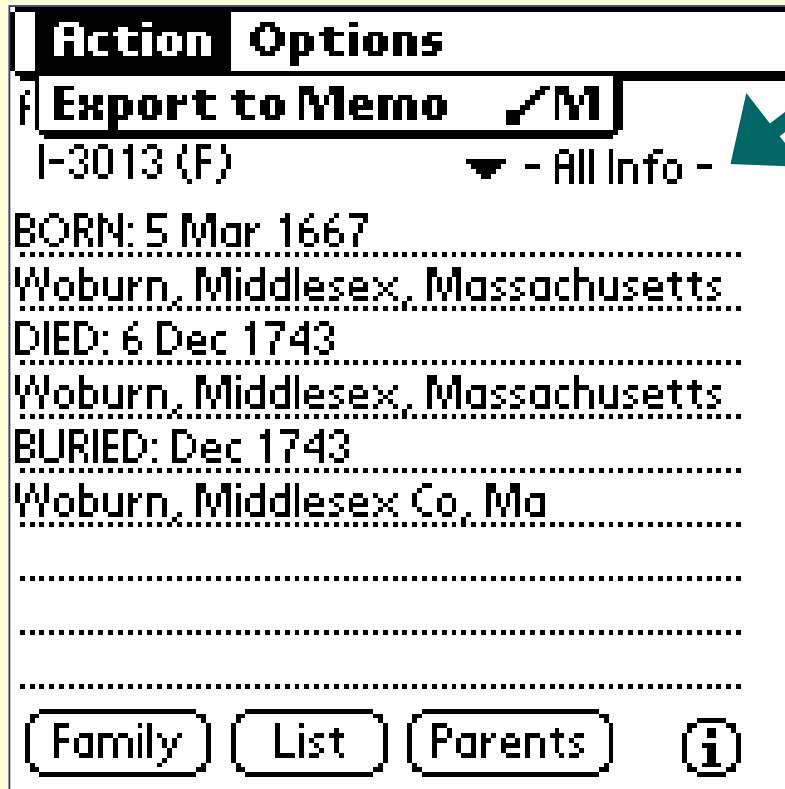
Done

The handheld instructions for saving information



Even though you can't enter information into PAF for Palm, you can export data from to the Memo utility of your handheld, and then make notes or changes that you later upload to your PC. You can then cut and paste or otherwise enter the information in to PAF 5.

Select *Export to Memo*



Tap the Menu icon on your handheld (it usually looks like a little pull-down menu), and select *Export to Memo*. Then, in the Memo utility, select the memo you've exported and make whatever notes or changes you want.

The next time you perform a HotSync, this new memo will upload to your PC, and you can then copy from it or print it.

How to Find Information in PAF for Palm

- **The handheld's Find function**
Names, Places, Notes, and Dates
- **The Search utility in PAF for Palm**

How to Find Information in PAF for Palm

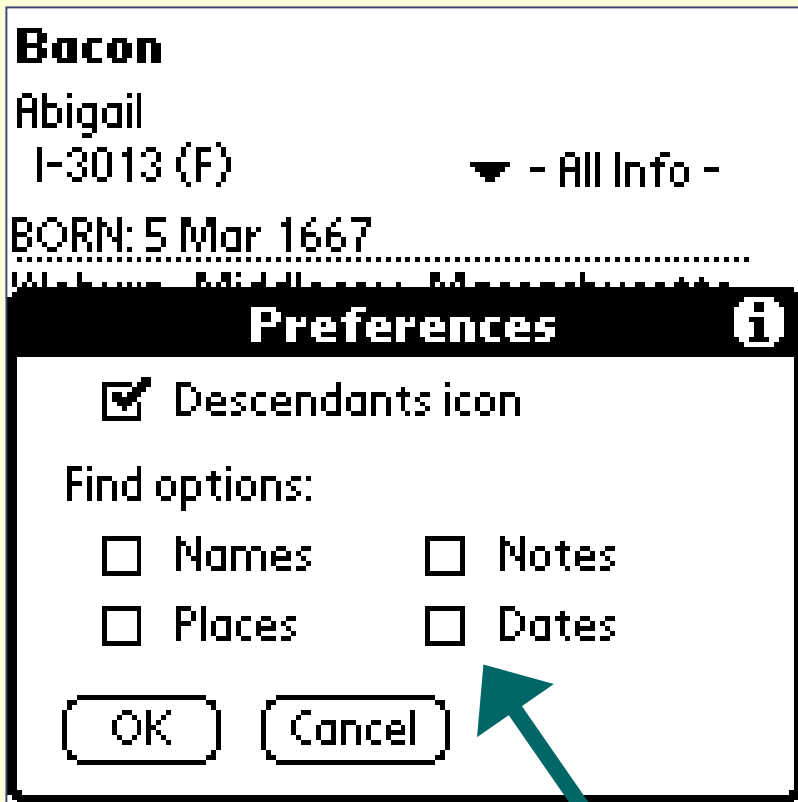
Select *Preferences*

Action	Options	
Abigail	Preferences...	✓P
I-3013 (F)	Database Info...	✓I
BORN: 5 M...	Databases...	✓F
Woburn, M...	About PAF	✓R
DIED: 6 Dec 1743		
Woburn, Middlesex, Massachusetts		
BURIED: Dec 1743		
Woburn, Middlesex Co, Ma		
.....		
.....		
.....		
.....		
Family	List	Parents
		i

You can use either of two separate searching utilities to find information in your PAF for Palm database. One is the Find function, which allows you to search for words and numbers anywhere in your handheld. The other is the Search feature of PAF for Palm.

The Find feature is the more powerful of the two. It is represented by a little magnifying glass icon opposite from your Menu icon.

To use the Find feature within PAF for Palm, tap the Menu icon on your handheld and select *Preferences* from the Options pull-down menu.



Select which features to use with the Find feature on your handheld

The Preferences box allows you to customize the Find feature so that you can search through the PAF for Palm names, places, notes, and/or dates.

Using Find brings up a screen listing all the items in your handheld that contain the names, places, note contents, or dates (years only) you enter.

This does not work with the program's Search button. It works only with the Find feature, which you access by clicking on the little magnifying glass icon.

Also, selecting or deselecting the *Descendants icon* checkbox determines whether little square bullets mark the names of individuals with descendants listed in this database.

The PAF for Palm Search Utility

Personal Ancestral File

Search ⓘ

Surname:
brigham.....

Given name:
john.....

Use Soundex

REFN:

Search Cancel Clear

Within the PAF for Palm program is a Search utility. Selecting the *Search* button at the bottom of some screens brings up this Search screen.

You can perform a name search by entering the surname and either the entire given name or the first letter of the given name. The Search program looks for the entire surname name and matches on letters within the given name. Capital letters are not necessary.

We have had mixed success with this Search utility. Sometimes it worked well; other times, it did not work at all. Your success with it may depend on the version of Palm OS software on your handheld.

Beaming a PAF for Palm Database between Handhelds



Beaming Databases between Handhelds

Databases		
Name	People	Kb
metcalf	9255	778
Rands5	281	30
foy	406	63
brighams	1986	225

Select Delete Info **Beam** ⓘ

Select **Beam** and then select the database you want to send to another handheld

You can use your handheld's beam function to transfer entire databases back and forth between handheld users. This is much easier than uploading the PAF for Palm database to a PC, moving it to another PC, and downloading it to another handheld.

Click the Menu icon, then select *Options* from the pull-down menu. Select *Databases*.

Select the *Beam* button at the bottom of the Databases screen, then tap on the name of the database you want to beam to another handheld.

(Note: One database is highlighted here because it is running. You can beam any database, even one that is running.)

Using Multiple Databases

Databases

Name	People	Kb
metcalf	9255	778
Rands5	281	30
fay	406	63
brighams	1986	225

Choose the **Select** button (below), then tap on the name of a database (above) to open it

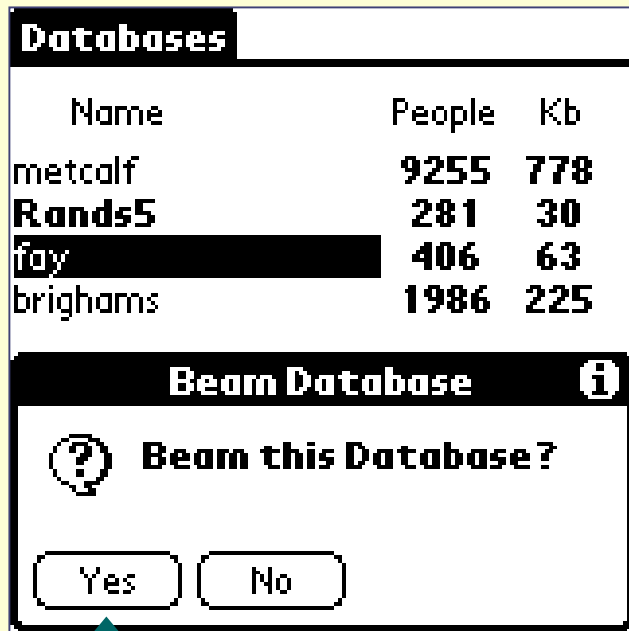
Select **Delete** **Info** **Beam** ⓘ

You can load multiple PAF for Palm databases into your handheld, using the PAF 5 Export feature.

To access databases you have downloaded, select the Menu icon, then select *Options* from the pull-down menu. Select *Databases*.

Tap on the *Select* button at the bottom of the Databases screen, then tap on the name of the database you want to open. If a database is already open, its name will appear highlighted (darker, actually).

Your Handheld Screen



Select Yes if you have chosen the correct database to beam

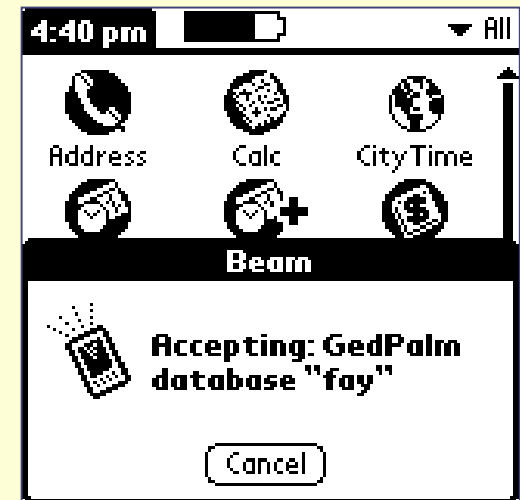
The screen at left will appear on your handheld, asking if the highlighted database is the one you want to beam to another handheld.

After your handheld locates another handheld in beaming range and beams the file to it, the messages below will appear on the recipient's handheld:




If Yes is chosen →

The Recipient's Handheld



Some Final Tips

- 
- If your PAF 5 database has thousands of names, create and export several smaller databases to export into PAF for Palm – they will be easier to navigate than one huge file.
 - Be careful what software you download and install on your PDA. Don't overload it with games and utilities you won't use.
 - Install one application at a time and make sure your handheld still works well after each new piece of software you load.



One Final Tip on HotSync

If you don't plan to read e-mail on your handheld, you must configure your handheld not to download e-mail from your PC. Otherwise, your handheld could fill up with e-mail messages that must be deleted one message a time. Tedious – and annoying! (We speak from experience...)

To avoid this problem, open the Palm Desktop screen on your PC. Select the HotSync pull-down menu, and then select *Custom*. Click *Change* on the the *Mail* option and then select *Do Nothing*. Click *OK* on that screen, then click *Done* on the next screen.